



Pressure sensor Type 785

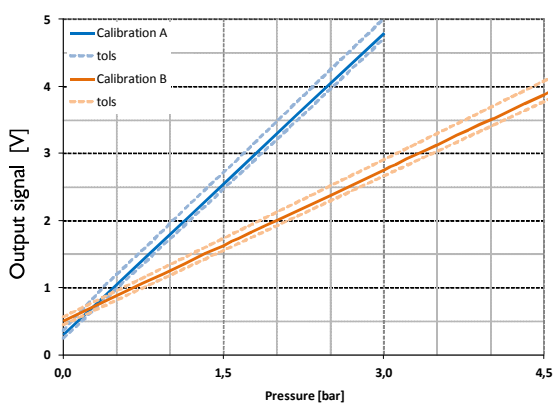


Description

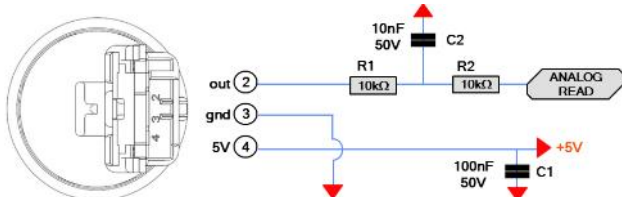
A Hall effect pressure sensor suitable for the CH circuit of wall-hung boilers. The output is a voltage signal proportional to the pressure detected, whose characteristic line can be electronically adjusted through a multipoint calibration over the range according to customer needs. Output lines, HW and Hydraulic Interfaces could be customized on request.

Output diagram

Examples of typical output lines



HW interface on boiler board



Note: alternative pin out available on request



Datasheet

Ambient temperature

From 2° to 70°C

Water temperature

From 2°C to +95°C, peak 110°C

Water pressure

See table of output lines

Electrical connections

Rast 2.5

Power supply 5VDC

Current consumption <6mA

Hydraulic interface

Quick connection with steel clip and O-ring

Typical output signal

Linear between 0 and 5VDC

Other features

Water splash protection cover (optional)

Overall dimensions

