

Hvac components



Pressure sensor Type 784

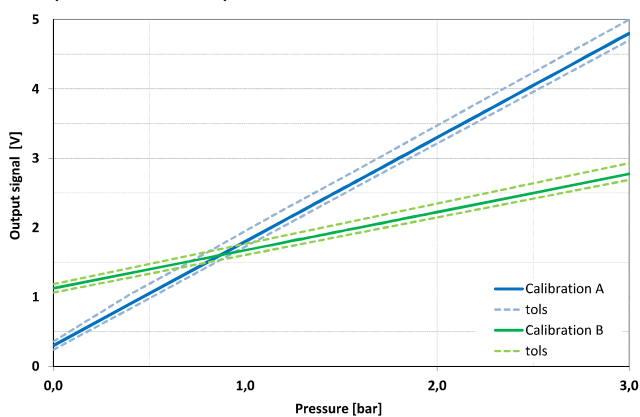


Description

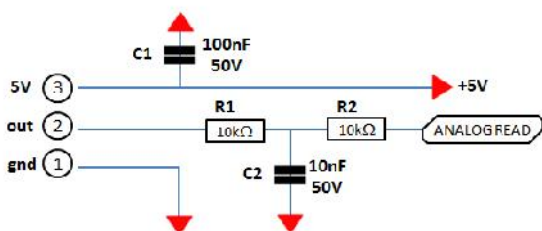
A LVDT pressure sensor suitable for the CH circuit of wall-hung boilers. The output is a voltage signal proportional to the pressure detected, whose characteristic line can be electronically adjusted through a multipoint calibration over the range according to customer needs.

Output diagram

Examples of available output lines



HW interface on boiler board



Datasheet

Ambient temperature

From 2° to 70°C

Water temperature

From 2°C to +95°C, peak 110°C

Water pressure

See table of output lines

Electrical connections

Rast 2.5

Power supply 5VDC

Current consumption < 6mA

Hydraulic interface

Quick connection with steel clip and O-ring

Typical output signal

Linear between 0 and 5VDC

Other features

Water splash protection cover (optional)

Overall dimensions

